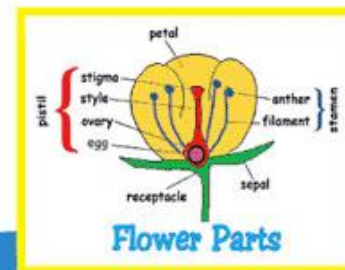


Pollination

FLOWERS ARE CLEVER LITTLE INVENTIONS USED BY PLANTS TO MAKE SEEDS.

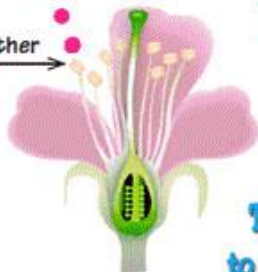


Another part of the plant called the **'pistil'** leads to the **'eggs.'**

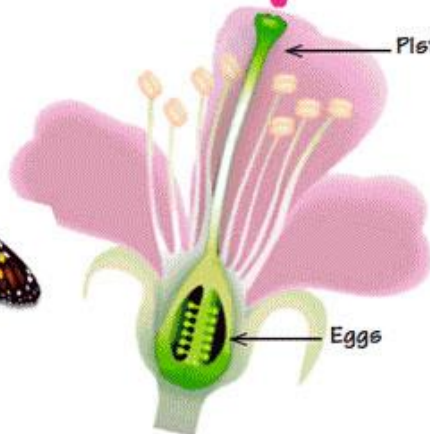


One part of the flower called the **'ANTHER'** makes pollen.

Anther



To make a seed, pollen has to find its way to the **'pistil'** and travel down to reach the **'egg.'** This is called **'pollination.'**



Pistil

Eggs



This is how it works.

One part of the flower called the anther makes pollen. Another part of the flower, called the pistil produces an egg. To make a seed, the pollen has to find its way to a pistil and travel down to reach the egg. This is called "pollination."

The problem is ...how do you get the pollen where it is supposed to go?

This is where butterflies, bees, hummingbirds and other "pollinators" come in. When they visit a flower to sip its nectar, pollen gets stuck on their bodies. Then... when they travel to another flower, the pollen comes off onto the stigma of the other flower and the pollen can make its way down to the egg. The pollen joins with the egg and the result is a seed... a baby plant in a protective case filled with food.



ONCE THE POLLEN JOINS AN EGG, IT BECOMES A SEED. SEEDS GROW TO BE NEW PLANTS

Kids Growing Strong